





---

# Carrera Tower, EC1V

£900,000 Leasehold

1 bedroom apartment for sale

---

## Description

Chase Devani are delighted to market this outstanding 30th Floor, 1 Bedroom apartment Situated in the heart of London, Carrera Tower- 250 City Road is within walking distance of Old Street, Angel and the financial district of the city.

Boasting a sophisticated design and high-quality finishes throughout, this gorgeous 1 bedroom property provides a comfortable and contemporary living space.

Residents of this exclusive apartment building will have access to a range of amenities, including a fitness centre, 24 hour concierge service, and an option for secure parking facilities. The building is well-maintained and features modern security systems to ensure the safety and comfort of all residents.

With its central location, this property offers easy access to a variety of shops, restaurants, cafes, and cultural attractions. Public transportation links are also within close reach, providing convenient connections to other parts of the city.

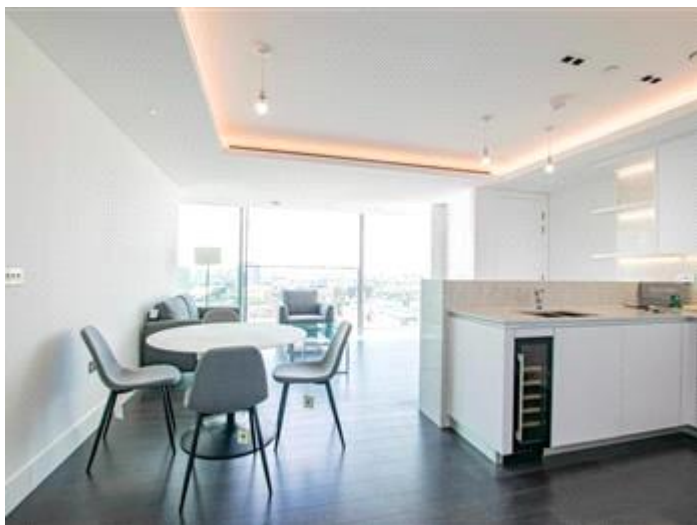
Tenure: Leasehold

## Tenure

Leasehold







Viewing by appointment only  
CDV Property Consultants Ltd - Head Office  
348a Kilburn High Road, London NW6 2QJ  
Tel: 02073288800 Email: [admin@chasedevani.co.uk](mailto:admin@chasedevani.co.uk) Website: <http://www.cdv-properties.co.uk/>

