



Capital Building, New Union Square, London

£1,275,000 Leasehold

2 bedroom apartment for sale

Description

Stunning two bedroom apartment situated within Embassy Gardens, a fantastic development in Nine Elms with amazing facilities and very close to Vauxhall.

The apartment comprises; Large open plan kitchen reception room with a large balcony, 2 double bedrooms, master with 1 en-Suite shower room and a further family bathroom.

The apartment benefits from partial river views, parking and over 1000sqft of space.

Within the development the residents have exclusive use of a private gymnasium, yoga studio, indoor and outdoor pool, cinema, residents library & lounge, business suite and 24 hr concierge.

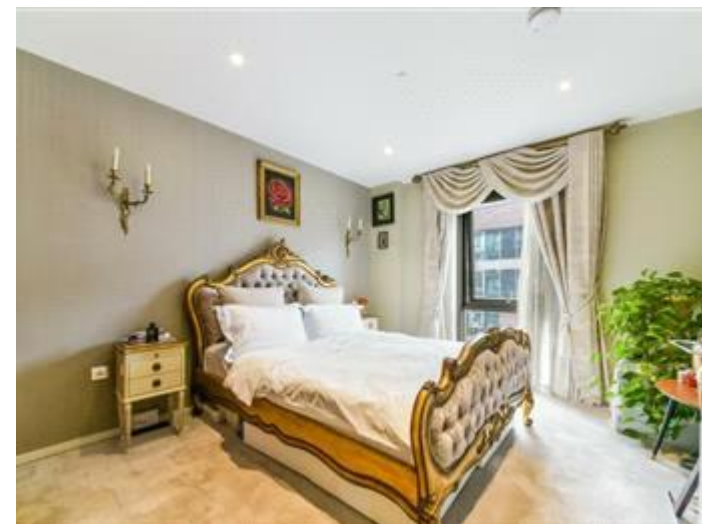
Tenure: Leasehold

Parking options: Off Street

Tenure

Leasehold





Viewing by appointment only
 CDV Property Consultants Ltd - Head Office
 348a Kilburn High Road, London NW6 2QJ
 Tel: 02073288800 Email: admin@chasedevani.co.uk Website: <http://www.cdv-properties.co.uk/>