



# 2 Principal Place, Worship Street, London

£3,100,000 Leasehold

3 bedroom apartment for sale

## Description

Chase Devani are delighted to market this magnificent three bedroom, three bathroom penthouse located in Principle Tower on the 34th floor presenting a deluxe living experience within one of London's most captivating new complexes.

The development's impressive residential towers offer awe-inspiring views of the City of London. Offering 1,460 Sq Ft including Terrace space, this stunning apartment boasts an open-plan kitchen & living room, three bedrooms, three bathrooms and a beautiful terrace,

Apart from the apartment's lavish living quarters, occupants of Principle Tower can take advantage of an array of top-notch facilities that include an edgeless infinity pool, spa, sauna, state-of-the-art gym overlooking the piazza, a cinema and residents lounge. Residents also have access to a 24-hour concierge service akin to the likes of five star hotels.

Tenure: Leasehold

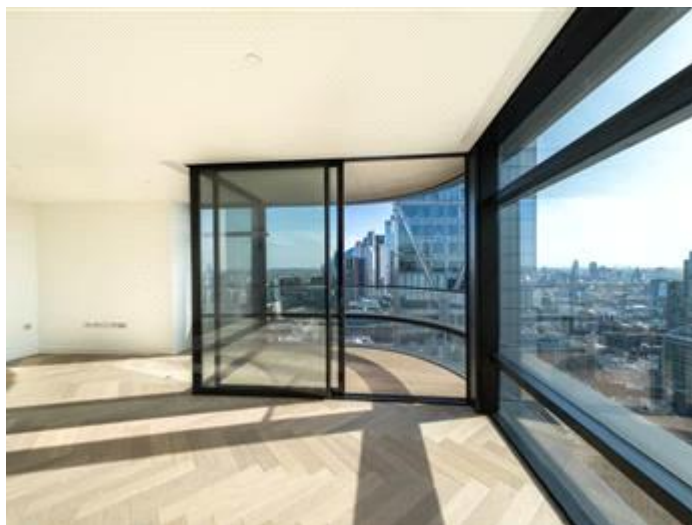
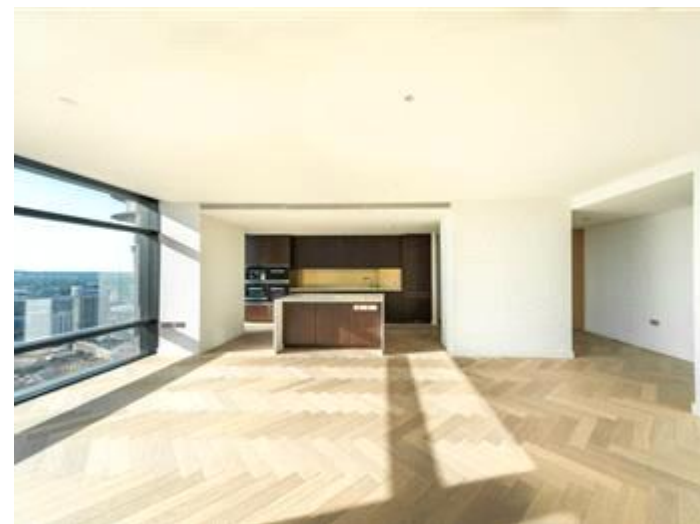
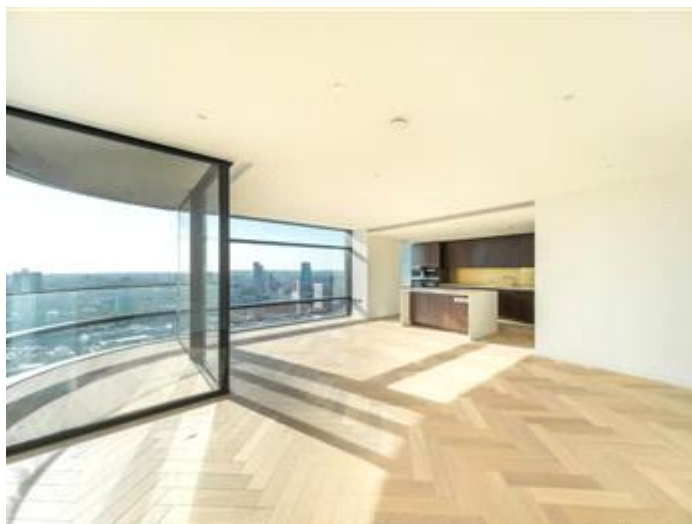
## Tenure

Leasehold









Viewing by appointment only  
 CDV Property Consultants Ltd - Head Office  
 348a Kilburn High Road, London NW6 2QJ  
 Tel: 02073288800 Email: [admin@chasedevani.co.uk](mailto:admin@chasedevani.co.uk) Website: <http://www.cdv-properties.co.uk/>

